

Operations Manual

EUROWAGON

Office Wagon with Kitchenette



Contents

Introduction..... 3

Safety Information 3

Before transporting the wagon 4

Installing the Wagon for usage onsite..... 5

Operating the Wagon 8

Operating the wagon via the Generator 8

Operating the wagon via Mains Power 8

Water Storage Tank..... 10

Filling the fresh water tank 11

Emptying the fresh water tank..... 11

Switchboard..... 12

Service and Maintenance..... 12

Air Conditioners..... 13

Introduction

Introduction

Thank you for choosing and purchasing the isothermal mobile trailer made by EUROWAGON Ltd.

Our products are the result of extensive research into construction and design, and primarily of our experience with manufacture. The aim was to develop and construct a mobile trailer, which would be easy to transport anywhere at low costs. In addition, we tried to achieve a user-friendly trailer with such equipment, which would guarantee high efficiency and long-term functionality.

The user should read these instructions carefully, to be able to fully understand the operation and maintenance of the mobile trailer.

We believe that our mobile trailer, if installed properly in accordance with the articles in this instruction manual, will work safely and provide you with comfort in the years to come.

Safety Information

Safety Information

This instruction manual includes important information regarding the **USER'S SAFETY**. Please make sure that you read these instructions carefully before commencing to use the trailer. If necessary, contact the dealer in order to ensure the safety of all persons and your property.

Due to the integrity of engineered design and structural balance, handling at high speeds may vary depending on the towing vehicle. All wagons are to be towed **NOT IN EXCESS OF 80km/h** on sealed roads and not in excess of 40km/h for unsealed roads (please refer to Warranty Conditions for further information).

During transportation, installation and maintenance follow the rules described in this instructions manual. Use the wagon in accordance with official fire regulations, road traffic regulations, and local laws.

In case of a fire, while the wagon is connected to the power source, under no circumstances should you use water or foam fire extinguishers to extinguish the fire.

Maintain the correct tyre pressure.

PLEASE NOTE:

It is forbidden for persons and animals to be inside the wagon while in transport.

The wagon's recommended towing speed is **maximum 80km/h**.

The maximum height clearance is **3.5m** from the ground level to the top of the wagon.

Only authorized personnel should carry out any repairs and maintenance of all electrical appliances, power distribution, and the distribution of water, waste or gas.

Before transporting the wagon

Before Transporting the Wagon:

Make sure the following items have been checked:

- a) The power cable, earthing, service pipes (water, gas, waste etc.), are disconnected from the mobile trailer.
- b) The trailer is correctly coupled to the tow hitch (Figure 1D), that the break-away cable is hooked up to the hitch loop on the towing vehicle (Figure 1E), and that the outer lighting of the trailer is plugged in the socket of the towing vehicle.
- c) The hand brake is released. (Figure 1A)
- d) The corner steady (Figure 2) and the jockey wheel (Figure 1F) are pulled up fully and fixed into travelling position.
- e) External lights are not damaged and work properly.
- f) Tyres are not damaged, have the correct tyre pressure that suit to the load and parameters, and the tread depth is in accordance with the rules.
- g) The steps are safely fixed to the door hitches.
- h) The door, windows, shutters and roof hatches are closed, locked and made secure against opening.
- i) The drawers and cabinets are fixed.
- j) All equipment, which is not fitted, is secured against any movement (TV, chairs, kitchen appliances, etc.).
- k) The load is evenly distributed (for safety reasons, individual parts must not be overloaded)

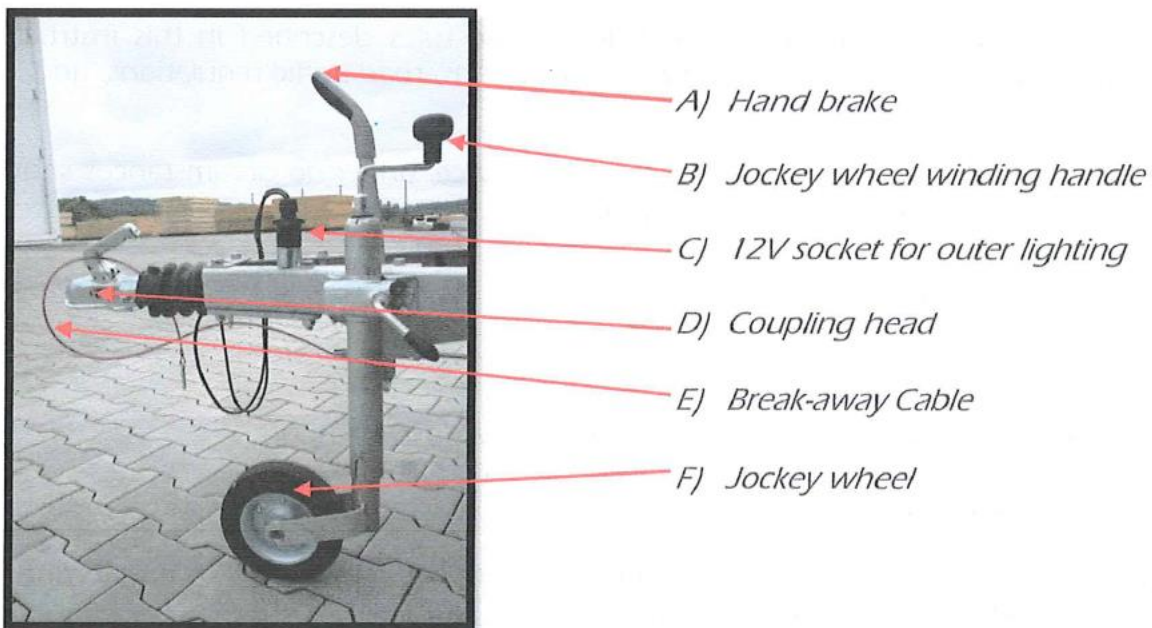


FIGURE 1

Installing the Wagon for usage onsite

Installing the Wagon for Usage Onsite:

WARNING

Before connecting the wagon to the power source, make sure that the electricity grid is in compliance with the information on the label.

Before connecting the electric cable, ensure the circuit breakers in the power distribution box are in "off" position. After the cable is connected, resume the "on" position. Make sure the energy source is on.

If the wiring in the wagon does not work, call qualified personnel, who are authorized to maintain and operate electrical equipment. An unauthorized person **MUST NOT** open or remove the covers from electrical equipment including sockets, switches, and plug ends. Any work on the above mentioned is **FORBIDDEN**. Avoid inserting any objects, which are not intended for the purpose, into electrical appliances. Protect the distribution wiring and electrical appliances from running or splashing water. Unauthorized persons are allowed only to change light bulbs.

Any unauthorized manipulation with electrical appliances may cause dangerous electric shocks or damage to the wagon or your property!!!

The wagon **MUST** always be disconnected completely from the power source before any maintenance or repairs are carried out.

Do not disconnect the electric cable if your hands are damp or wet. Do not handle the electric cable in a damp or wet environment. You may be exposed to the risk of electric shocks.

Do not cover the direct heating and its panels with objects of any kind. To avoid risks of fire, do not use it for drying.

For detailed information, refer to the instruction manuals for each individual electrical appliance.



Be cautious when moving the wagon in confined spaces and/or when reversing. If necessary ask for assistance.

Once the wagon is placed on site where it is to be utilised:

- 1) Apply the hand brake (Figure 1A) by pulling upwards towards the wagon, be careful not to over-tighten the handbrake.

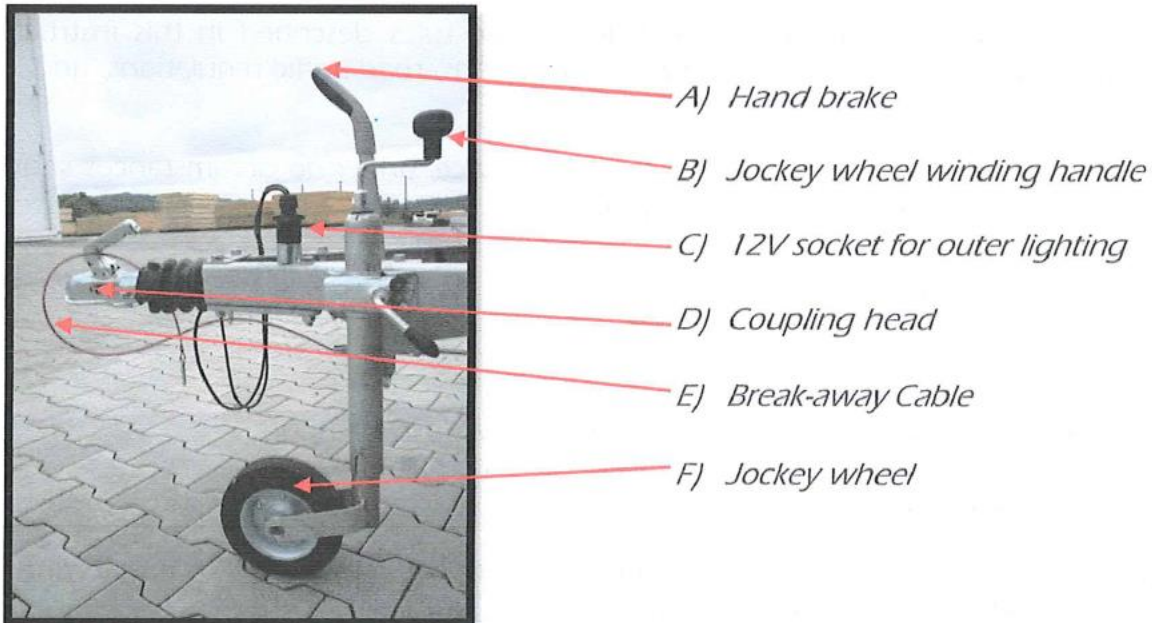



FIGURE 1

- 2) Un-fold the Jockey Wheel down (Figure 1F) so it is in the wheel will touch the ground when winded down. Turn the Jockey Wheel Winding Handle (Figure 1B) in an anti-clockwise direction until the jockey wheel descends to the ground. Make sure to not raise the drawbar too high as this may cause damage to the wagon. The jockey Wheel (Figure 1F) MUST NOT be used as a support. Use the Stabiliser Feet as a support (Figure 2). The jockey wheel is also NOT to be used to jack up the wagon, damage may be caused to the jockey wheel and/or wagon and your warranty claim will be regarded as invalid.
- 3) Unplug the outer lighting socket (Figure 1C) from the towing vehicle and place into the designated holding bay on the draw bar.
- 4) Disconnect the break-away cable (Figure 1E) from the towing vehicle.
- 5) Undo the Trailer Safety Chains from the Towing vehicle.
- 6) Uncouple the coupling head (Figure 1D) from the towing vehicle, by lifting the coupling handle up. You will know that it has been released from the towing vehicle as there is a red and green indicator on the side of the coupling head. Green Indicates the coupling head is engaged on the towing vehicle and red indicates the wagon is not connected to the towing vehicle.
- 7) Use the corner steadies (stabiliser feet) (Figure 2) to secure the stability of the trailer. If the ground is soft, we recommend that you chock the stabiliser feet (e.g. using a pieces of wood underneath).

 **IMPORTANT** – The Stabiliser Feet (Figure 2) are NOT to be used to jack up the wagon. This may cause damage to the stabiliser feet and your warranty claim will then be regarded invalid.

- 8) Wheel chocks are to be used in place as an extra safety item, these are located on the chassis near the rear of the wagon. (Figure 3).
- 9) Open the external doors and you will find on the inside of the door, the steps for the external doors (Figure 4). Unhook the steps from the door, and place them into the designated slots in the chassis under each external door (Figure 5B). Mount the handrail (Figure 5A) onto the steps (Figure 5C). The handrails are located on the internal wall inside the wagon.



FIGURE 2

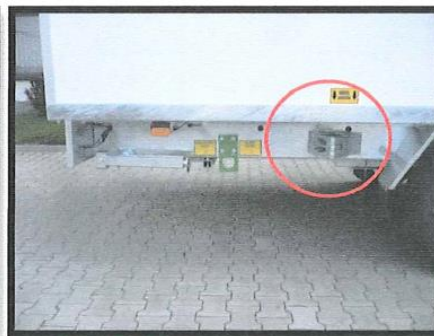


FIGURE 3



FIGURE 4

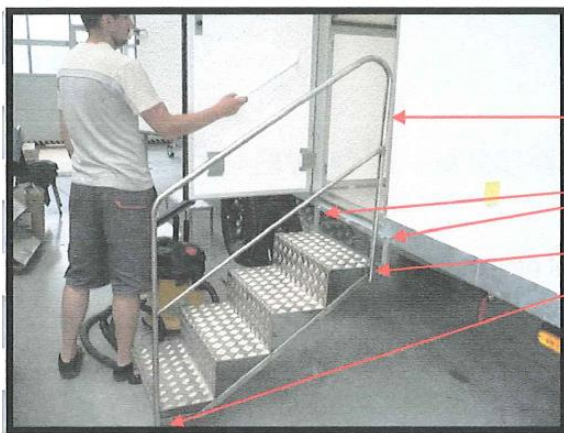


FIGURE 5

A) Handrail for Stairs

B) Inserts for Steps

C) Mount Handrails onto steps using designated slots.

Operating the Wagon

Operating the Wagon:

There are 2 options to running the wagon; either from mains power or the generator. Please refer to the below options for information / instructions on how to start the wagon using one of these methods:

Operating the wagon via the Generator

Operating the wagon via the Generator:

This wagon is powered by a 5.5kva GL6000 Kubota Generator. The generator is located at the back of the wagon. The doors to the back of the wagon must be open while the generator is in use.

To operate the wagon using the Generator Power:

- 1) Go to the switchboard room and turn the selector switch to 'Gen'.
- 2) Go to the Generator at the front of the wagon and turn the isolator switch and press the start button once, within 5 to 10 seconds the generator will start.

Please refer to the Generator Instruction Manual located in the wagon for further operation instructions.

Operating the wagon via Mains Power

Operating the wagon via Mains Power:

To operate the wagon through Mains Power:

- 1) Connect three 15amp leads to the three 15amp inlet mains power on the wagon, at the switchboard room ([photo below](#)).



2) Go to the back of the wagon and turn the selector switches to 'AUX, or 'EXT', this should now supply power to the wagon for use.



Filling the Diesel Tank:

To fill the Diesel tank go to the front of the wagon.



Water Storage Tank

There is a Water Storage Tank which can hold up to 200L Water under the crib/sink Non-Potable Water only



Filling the fresh water tank

Filling the Fresh Water Tank:

NOTE: STABILISER FEET MUST BE DOWN AND ENGAGED BEFORE COMMENCING THE FILLING OF THE FRESH WATER TANK!



- 2) Open the red valve (Figure 8B) to a horizontal position to allow the water to flow to the tank.

Once the tank is full, turn the red valve to the vertical position.

Emptying the fresh water tank

Emptying the Fresh Water Tank:

To empty the fresh water tank, turn the red valve handle to the horizontal position.



Switchboard

Switchboard:

The electrical switchboard is located in its own lockable enclosure on the external side of the wagon. (Figure 13 and Figure 14).

The electrical switchboard is for Authorised Personnel Only. If you are not a Certified Electrician or Authorised Personnel you MUST NOT gain access to the switchboard in anyway. The warranty will be void should unauthorised Personnel come into contact with the switchboard.

WAGON02



Service and Maintenance

Service and Maintenance:

All bolts that secure the axle members (FIGURE 15), drawbar (FIGURE 16-19), mudguards (FIGURE 20) and front coupling (FIGURE 21) need to be checked periodically in the first 12 months of service.

Two (2) grease nipples are located in the top section of the front coupling (FIGURE 22). These require regular greasing to assist the mechanical braking sleeve.



FIGURE 15



FIGURE 16



FIGURE 17



FIGURE 18

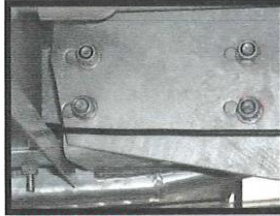


FIGURE 19



FIGURE 20

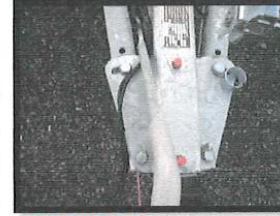


FIGURE 21

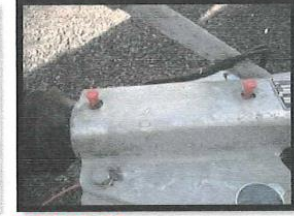


FIGURE 22

Cleaning the Wagon:

To clean the wagon, use only warm water and common detergents. DO NOT use solvents or diluters. DO NOT use pressure washers to wash the wagon – water may run unto the wiring and cause damage to some interior and exterior parts. In such case, your warranty claim will be invalid.

Damaged Panels:

If the outer shell of the wagon (external walls) is damaged, it must be repaired immediately. In doing so, you will prevent water to run into the inner walls, and thus avoid following complications (e.g. your warranty claim being regarded invalid).

Only authorized personnel should carry out any repairs and maintenance to the wagon including for all electrical appliances, power distribution, and the distribution of water, waste or gas.

Appliances Fault:

Should any appliance that is connected to the wagon be at fault, notify the appropriate personnel immediately.

Only authorized personnel should carry out any repairs and maintenance to the wagon including for all electrical appliances, power distribution, and the distribution of water, waste

Air Conditioners

The A/C can be setup in different configurations.

1. First configuration is where only one A/C can be powered by the genset, if A/C1 fails turn the selector switch to A/C2.
2. Second configuration is where you can have external power to both A/C's this will require an electrician to make changes to how the configuration is setup.