

## For Sale 100 Person Camp

Catalogue No: 100PC

### 100 Person Camp

Please note: Depending on stock availability at the time, second-hand buildings pictured may differ in appearance, photos supplied are for display purposes only. Actual building sizes subject to inspection & confirmation of measurement. To see what's available in current stock please contact us on 1300 672 343

#### MINING CAMP

Mining Camp available for sale built to comfortably accommodate 100 people. The camp Kitchen is in excellent condition and has only been on hire to the one client in the one location, this camp is sold 'as is where is'. The Kitchen Diner can have additional dining floors added to meet the capacity of 200 persons.

Qty 27 available Accommodation Units - 14.4m x 3.3m Four Person Quarters

Qty 1 Three Room 14.4m x 3.3m Accessible Accommodation Unit

Qty 1 available Kitchen - 21.0m x 12.0m, consisting of eight floors, capable of catering up to 200 persons with additional dining floors added.

Qty 3 Laundries available - sizes are two 14.4m x 3.0m, and one 6.0mx3.0m

Qty 2 Ice rooms available, sizes are Ice Room - 9.33m x 3.4m and a 6.0x 3.0m Ice Room

Qty 2 First Aid Buildings, sizes are 12.0m x 3.0m and 6.0 x 3.0m

Qty 2 Unisex Accessible Ablution Buildings 6.0m x 3.0m

Vast quantities of Administration Buildings available - 12.0m x 3.0m, 12.0 x 6.0m, 12.0 x 12.0 x9.0m plus more.

Available for immediate sale, complete transportable camp to suit any combination between 100 and 200 Man capacities

Transportable buildings available for immediate collection from the Pilbara WA.

Please see breakdown of building types, building descriptions, and serial # of the buildings available for sale on the following pages.

100 Man Kitchen (capable of handling up to 200 person, the dining area would need additional seating space) is complete with cool rooms, freezers, full kitchen preparation area with all equipment and fitted out dining area with airlock.

## For Sale 100 Person Camp

Catalogue No: 100PC

### 100 Person Camp

Please note: Depending on stock availability at the time, second-hand buildings pictured may differ in appearance, photos supplied are for display purposes only. Actual building sizes subject to inspection & confirmation of measurement. To see what's available in current stock please contact us on 1300 672 343

## Accommodation Buildings

### Four Person Quarters 14.4mx3.3m ensuited - Two Available

Four Person Quarters 14.4mx3.3m ensuited  
Region D TC2 as at 2013  
Year Purchased 2013  
Quantity Available: 2  
Serial # A200169, A200183  
Manufacturer: Southern Cross Modular

Comes with the following:

- Four King Ensemble Beds
- Four Chairs
- Four Bar Fridges
- Four Split A/C
- HWS



[www.ascentionassets.com.au/camp/](http://www.ascentionassets.com.au/camp/)

### Four Person Quarters 14.4mx3.3m ensuited - Eleven Available

Four Person Quarters 14.4mx3.3m ensuited  
Region D TC2 as at 2011  
Year Purchased: 2011  
Quantity Available: 11  
Serial # 11248, 11263, 12053, 11261,  
11262, 11264, 11265, 11266, 11267, 11268, 11326  
Manufacturer: Pigdon Portables

Comes with the following:

- Four King Ensemble Beds
- Four Chairs
- Four Bar Fridges
- Four Split A/C
- HWS



## For Sale 100 Person Camp

Catalogue No: 100PC

### 100 Person Camp

Please note: Depending on stock availability at the time, second-hand buildings pictured may differ in appearance, photos supplied are for display purposes only. Actual building sizes subject to inspection & confirmation of measurement. To see what's available in current stock please contact us on 1300 672 343

## Accommodation Buildings

### Four Person Quarters 14.4mx3.3m ensuited - Five Available

Four Person Quarters 14.4mx3.3m ensuited  
Region D TC2 as at 2010  
Year Purchased 2010  
Quantity Available: 5  
Manufacturer: Pigdon Portables  
Serial # 10398, 10399, 10402, 10313,10401

Comes with the following:

- Four King Ensemble Beds
- Four Chairs
- Four Bar Fridges
- Four Split A/C
- HWS



### Four Person Quarters 14.4mx3.3m ensuited - One Available

Four Person Quarters 14.4mx3.3m ensuited  
Region D TC2 as at 2009  
Year Purchased 2010  
Quantity Available: 1  
Serial # 9373  
Manufacturer: Pigdon Portables

Comes with the following:

- Four King Ensemble Beds
- Four Chairs
- Four Bar Fridges
- Four Split A/C
- HWS



## For Sale 100 Person Camp

Catalogue No: 100PC

### 100 Person Camp

Please note: Depending on stock availability at the time, second-hand buildings pictured may differ in appearance, photos supplied are for display purposes only. Actual building sizes subject to inspection & confirmation of measurement. To see what's available in current stock please contact us on 1300 672 343

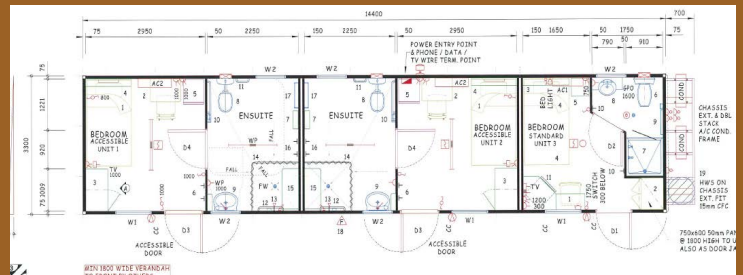
## Accommodation Buildings

### Three Person 14.4mx3.3m ensuited Accessible Room - One Available

Three Person Accessible Room  
14.4mx3.3m ensuited  
Region D TC2 as at 2011  
Year Purchased 2011  
Quantity Available: 1  
Serial # 12055

Manufacturer: Pigdon Portables  
Comes with the following:

- Three King Ensemble Beds
- Three Chairs
- Three Bar Fridges
- Three Split A/C
- HWS



### Four Person Quarters 14.4mx3.3m ensuited - Eight Available

Four Person Quarters 14.4mx3.3m ensuited  
Region D TC2 as at 2008  
Year Purchased 2008  
Quantity Available: 8  
Serial # 674, 675, 664, 673, 676, 686, 669, 685  
Manufacturer: Australian Portable Buildings

Comes with the following:

- Four King Ensemble Beds
- Four Chairs
- Four Bar Fridges
- Four Split A/C
- HWS



## For Sale 100 Person Camp

Catalogue No: 100PC

### 100 Person Camp

Please note: Depending on stock availability at the time, second-hand buildings pictured may differ in appearance, photos supplied are for display purposes only. Actual building sizes subject to inspection & confirmation of measurement. To see what's available in current stock please contact us on 1300 672 343

## Ice Rooms

### Ice Room 6.0mx3.0m ensuited - One Available

Ice Room 6.0mx3.0m  
Year Purchased 2008  
Quantity Available: 1  
Serial # 689 (689-2)

Manufacturer: Australian Portable Buildings

Comes with the following:

- One Water Chiller 500Lt
- Two Ice Machines C90

Processes up to 125kgs of ice per 24hrs



### Ice Room 9.33mx3.4m - One Available

Ice Room 9.33mx3.4m  
Region D TC2 as at 2013  
Year Purchased 2017  
Quantity Available: 1  
Serial # S-0111-00-0602514  
Manufacturer: AUSCO

Comes with the following:

- Two Ice Makers
- Two Ice Dispensers
- Two Water Coolers
- Two Split System A/C

Processes up to 250kgs of ice per 24hrs



## For Sale 100 Person Camp

Catalogue No: 100PC

### 100 Person Camp

Please note: Depending on stock availability at the time, second-hand buildings pictured may differ in appearance, photos supplied are for display purposes only. Actual building sizes subject to inspection & confirmation of measurement. To see what's available in current stock please contact us on 1300 672 343

## Laundry

### Laundry with Male Ablution 6.0mx3.0m - One Available

Laundry with Male Ablution  
6.0mx3.0m  
Region D TC2 as at 2013  
Year Purchased 2013  
Quantity Available: 1  
Serial # 0096-1013-LAU  
Manufacturer: Souther Cross Modular  
Comes with the following:

- Two Male Pans
- One Urinal
- Three commercial washer & dryers
- HWS



### Laundry with Linen & Cleans Store 14.4mx3.3m - One Available

Laundry with Linen & Cleaners Store  
14.4mx3.3m  
Year Purchased 2011  
Quantity Available: 1  
Serial # BR015001  
Manufacturer: Blue Ridge  
Comes with the following:

- Nine Speed Queen Double Stacker Washer & Dryers
- Two Teco Reverse Cycle A/C
- Linen Store
- Cleaners Room



## For Sale 100 Person Camp

Catalogue No: 100PC

### 100 Person Camp

Please note: Depending on stock availability at the time, second-hand buildings pictured may differ in appearance, photos supplied are for display purposes only. Actual building sizes subject to inspection & confirmation of measurement. To see what's available in current stock please contact us on 1300 672 343

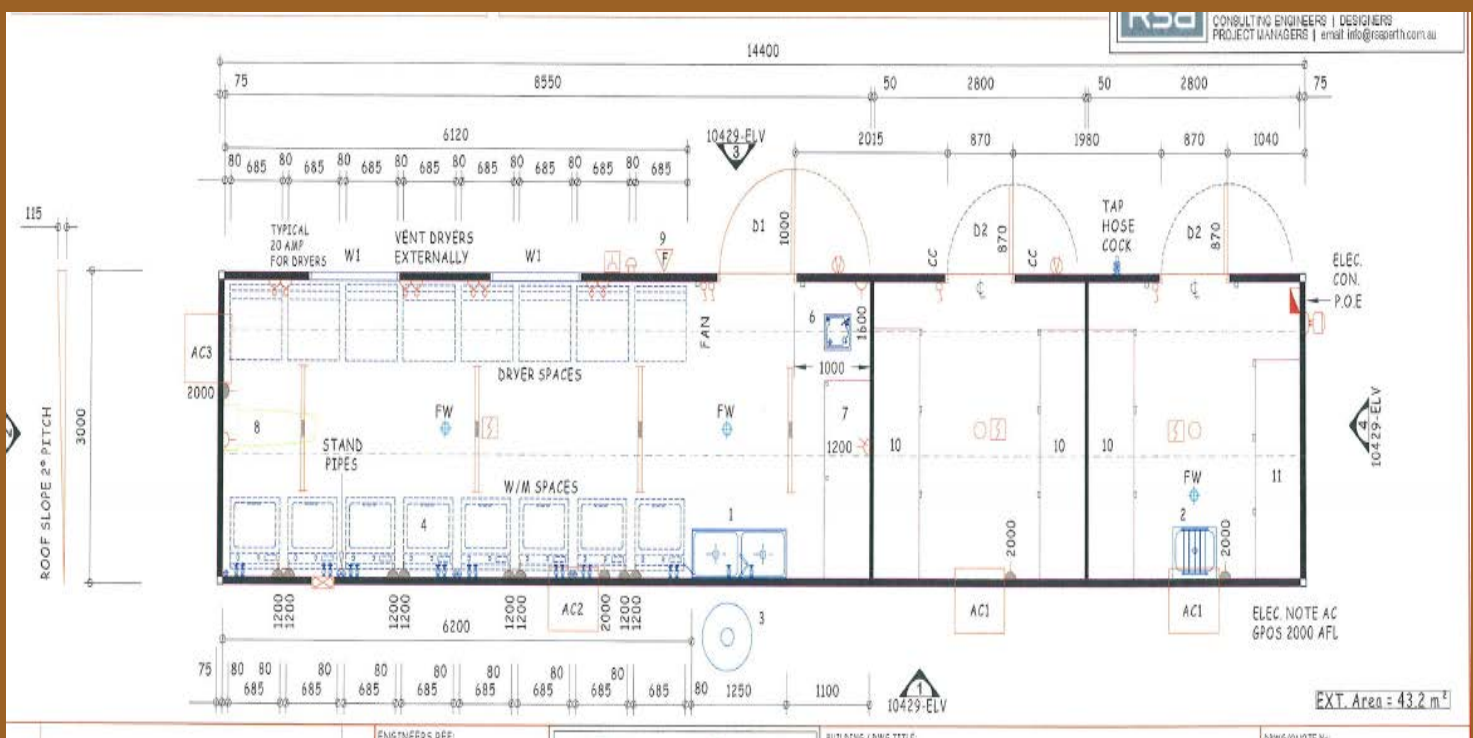
## Laundry

### Laundry 14.4mx3.3m - One Available

Laundry 14.4mx3.3m  
Region D TC2 as at 2010  
Year Purchased 2010  
Quantity Available: 1  
Serial # 10429  
Manufacturer: Pigdon Portables

Comes with the following:

- Eight Heavy Duty Maytag Washers
- Eight Heavy Duty Maytag Dryers
- Two Teco Reverse Cycle A/C
- Linen Store
- Cleaners Room



## For Sale 100 Person Camp

Catalogue No: 100PC

### 100 Person Camp

Please note: Depending on stock availability at the time, second-hand buildings pictured may differ in appearance, photos supplied are for display purposes only. Actual building sizes subject to inspection & confirmation of measurement. To see what's available in current stock please contact us on 1300 672 343

## First Aid Buildings

### First Aid Building 12.0mx3.0m - One Available

First Aid Building 12.0mx3.0m ensued  
Region D TC2 as at 2010  
Year Purchased 2010  
Quantity Available: 1  
Serial # 9439  
Manufacturer: Pigdon Portables

Comes with the following:

- Fully assisted unisex ablution
- Shower
- Treatment Room
- Examination Room
- Rest Room



### First Aid Building 6.0mx3.0m - One Available

First Aid Building 6.0mx3.0m  
Region D TC2 as at 2011  
Year Purchased 2011  
Quantity Available: 1  
Serial # 12038  
Manufacturer: Pigdon Portables

Features:

- External Double Doors
- S.S. Sink, S.S. Hand Basin
- Medical Treatment Bed
- HWS
- Teco Split System A/C





## For Sale 100 Person Camp

Catalogue No: 100PC

### 100 Person Camp

Please note: Depending on stock availability at the time, second-hand buildings pictured may differ in appearance, photos supplied are for display purposes only. Actual building sizes subject to inspection & confirmation of measurement. To see what's available in current stock please contact us on 1300 672 343

## Ablutions

### Unisex Accessible with Male Ablution 6.0mx3.0m

Unisex Accessible with Male Ablution  
6.0mx3.0m

Region D TC2 as at 2012

Year Purchased 2013

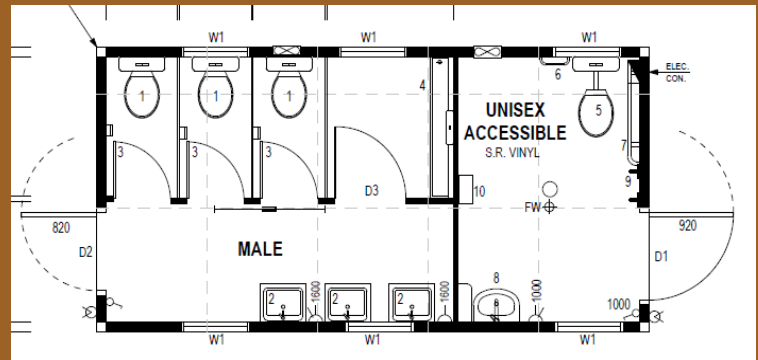
Quantity Available: 1

Serial # 0078-1212-DABL

Manufacturer: Souther Cross Modular

Comes with the following:

- Three Male Pans
- One Urinal
- Unisex Accessible Toilet
- S.S. Disabled Grabrail
- S.S. Disabled Cranked Grabrail



### Unisex Accessible with Male Ablution 6.0mx3.0m

Unisex Accessible with Male Ablution  
6.0mx3.0m

Region D TC2 as at 2011

Year Purchased 2012

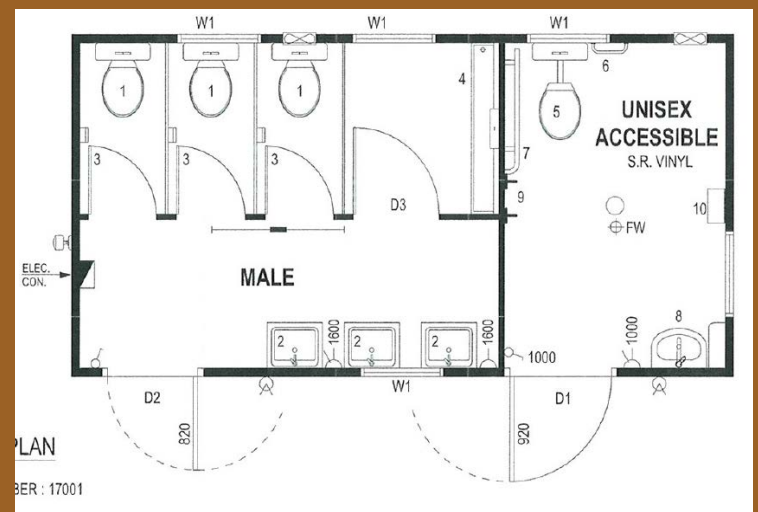
Quantity Available: 1

Serial # BR17001

Manufacturer: Blue Ridge WA

Comes with the following:

- Three Male Pans
- One Urinal
- Unisex Accessible Toilet
- S.S. Disabled Grabrail
- S.S. Disabled Cranked Grabrail



## 21mx12m Kitchen/Diner

Catalogue No: 100PC

### 100 Person Kitchen/Diner

Please note: Depending on stock availability at the time, second-hand buildings pictured may differ in appearance, photos supplied are for display purposes only. Actual building sizes subject to inspection & confirmation of measurement. To see what's available in current stock please contact us on 1300 672 343

100 Man Kitchen (capable of handling up to 200 person, the dining area would need additional seating space) is complete with cool-rooms, freezers, full kitchen preparation area with all equipment and fitted out dining area with airlock.



## 21mx12m Kitchen/Diner

Catalogue No: 100PC

### 100 Person Kitchen/Diner

Please note: Depending on stock availability at the time, second-hand buildings pictured may differ in appearance, photos supplied are for display purposes only. Actual building sizes subject to inspection & confirmation of measurement. To see what's available in current stock please contact us on 1300 672 343

### Dining room equipment

- Ice cream freezer
- Dining tables
- PVC chairs
- Cold salad / dessert well / buffet on stand with sneeze-guard
- Laminated bench tops
- Water urn 7.5 Litre
- Conveyor toaster / warmer - mobile
- Pie warmer
- Stainless steel sink with mixer tap
- Refrigerated dispensers for cold milk & beverages

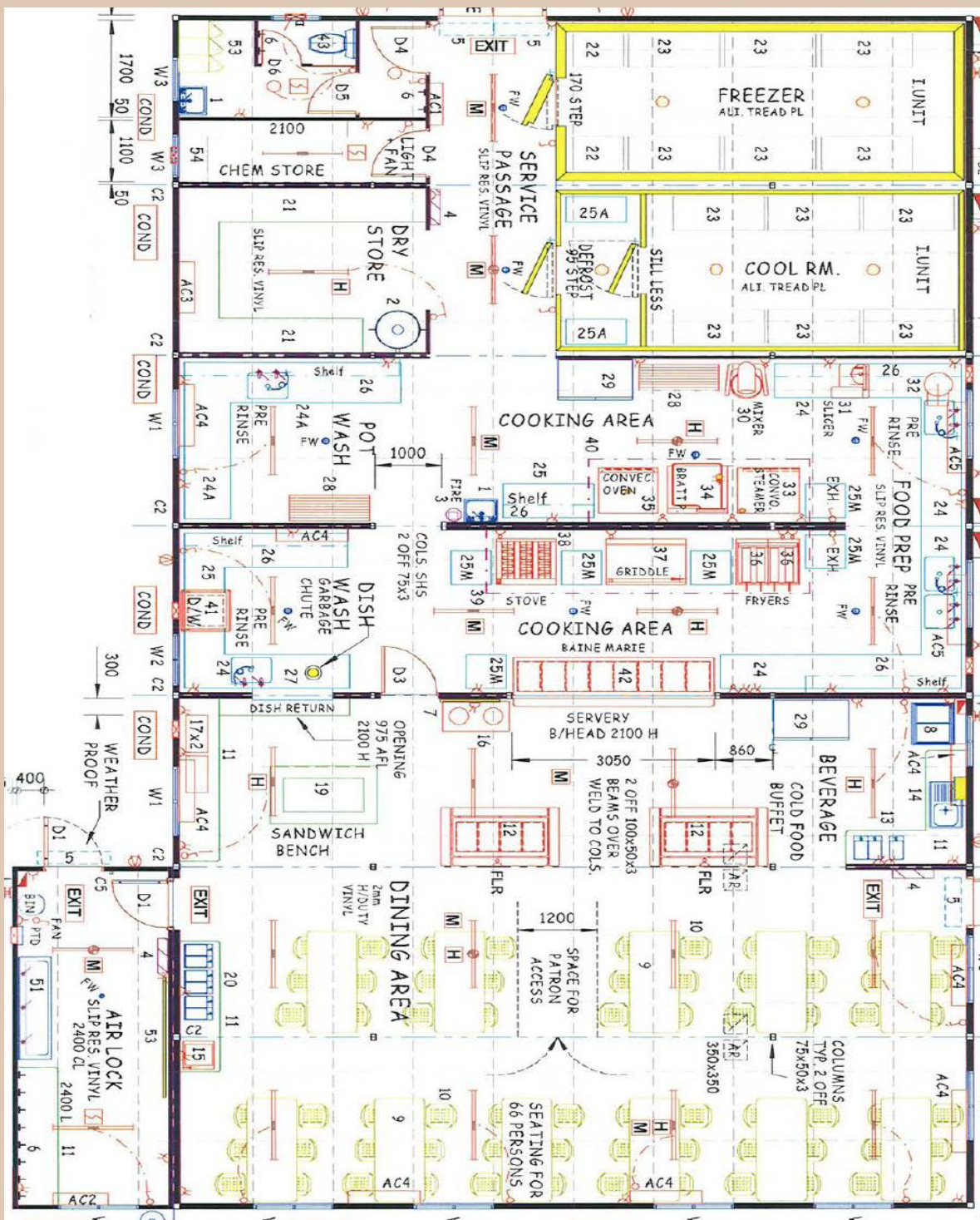


## 21mx12m Kitchen/Diner

Catalogue No: 100PC

### 21.0m x 12.0m Transportable Building

## Indicative Floor Plan 100 Person Kitchen/Diner



## 21mx12m Kitchen/Diner

Catalogue No: 100PC

### 100 Person Kitchen/Diner

Please note: Depending on stock availability at the time, second-hand buildings pictured may differ in appearance, photos supplied are for display purposes only. Actual building sizes subject to inspection & confirmation of measurement. To see what's available in current stock please contact us on 1300 672 343

## Kitchen & Cooking Equipment

- Three tier panel store room shelving with aluminum support posts
- Four tier zinc plated wire grid cool room freezer shelving with zinc plated support frames
- Refrigerated food storage with two doors
- Mixer 40 litre - floor mounted
- Meat slicer - bench mounted
- Vegetable peeler - 6kg capacity
- Two x Pan fryer - Waldorf
- Griddle plate on stand - Waldorf
- Pass-through dishwasher
- Hot baine marie (eight modules)
- Reverse cycle split system air conditioners
- Inbuilt ablution with one pan & basin
- Combi steamer ten tray Convo-therm on stand with shelf under
- Convection oven six tray Turbofan E35 on stand



Our kitchens offer an efficient solution that is flexible enough for the requirements of any site, whether that is a small portable lunch room or a large dining room for hundreds of people. The modular layout means you can change the size of your kitchen to suit the number of workers on site.